

VICTORIAN
YEAR BOOK
1984



This page was added on 11 January 2013 to include the Disclaimer below.
No other amendments were made to this Product

DISCLAIMER

Users are warned that this historic issue of this publication series may contain language or views which, reflecting the authors' attitudes or that of the period in which the item was written, may be considered to be inappropriate or offensive today.

VICTORIAN YEAR BOOK 1984

ERLE BOURKE

DEPUTY COMMONWEALTH STATISTICIAN

NUMBER 98

AUSTRALIAN BUREAU OF STATISTICS

VICTORIAN OFFICE

This edition first published in 1984 by the Victorian Office of the
Australian Bureau of Statistics,
Commonwealth Banks Building,
cnr Flinders and Elizabeth Streets, Melbourne.

This book is in International B5 format,
the text is set in 9 on 10 point Times Roman by Ruskin Press,
printed on Brochure Opaque printing paper, with
illustrations on Grenville Dull art paper,
and bound in Brella Book cloth.

National Library of Australia card number and
ISSN 0067—1223

Australian Bureau of Statistics catalogue number
1301.2

Printed in Australia by Ruskin Press,
and bound in Australia by Book Graphics Australia Pty Ltd.





(Frontispiece) *The Henty landing at Portland*, the 1934 Centenary prize winning painting by Archibald Colquhoun depicting the landing of Edward Henty at Portland on 19 November 1834.

Royal Automobile Club of Victoria (RACV) Ltd

(Front endpaper) *Batman's Treaty with the Aborigines*, a painting by John Wesley Burtt, 1890, showing John Batman "purchasing" land from the Aborigines in 1835.

La Trobe Collection, State Library of Victoria

(Back endpaper) The three buildings of the Victorian Arts Centre dominate the foreground of the Melbourne skyline as seen from Government House.

Australian Information Service

VICTORIAN YEAR BOOK 1984

Number 98



VICTORIA 150
GROWING TOGETHER 1984-5
© St of Vic 1981



GENERAL INFORMATION

SYMBOLS

The following symbols mean:

| | |
|--------|---|
| n.a. | not available |
| n.e.c. | not elsewhere classified |
| n.e.i. | not elsewhere included |
| n.p. | not available for separate publication (but included in totals where applicable) |
| n.y.a. | not yet available |
| p | preliminary—figure or series subject to revision |
| r | figure or series revised since previous edition |
| . . | not applicable |
| — | nil or rounded to zero |
| — | break in continuity of series (where a line is drawn across a column between two consecutive figures) |
| | M, males; F, females; T, total |

OTHER FORMS OF USAGE

The following abbreviations are used for the titles of the Australian States and Territories and Australia: N.S.W. (New South Wales), Vic. (Victoria), Qld (Queensland), S.A. (South Australia), W.A. (Western Australia), Tas. (Tasmania), N.T. (Northern Territory), A.C.T. (Australian Capital Territory), and Aust. (Australia).

Yearly periods shown as, e.g., 1983 refer to the year ended 31 December 1983. Those shown as 1982-83 refer to the year ended 30 June 1983. Other yearly periods are specifically indicated.

Values are shown in Australian dollars (\$) or \$A) or cents (c) unless another currency is specified.

Data are presented in metric terms as far as possible.

Where figures have been rounded, discrepancies may occur between sums of the component items and totals.

AVAILABILITY OF ABS PUBLICATIONS

The Victorian Office of the Australian Bureau of Statistics (ABS) maintains an Information Service, which on request, supplies available statistical information and advice on which publications are appropriate, and a library in which all publications of the ABS are available for reference. Businessmen, government officers, students, and members of the public are invited to make use of these services.

Information regarding the availability of ABS publications can be obtained from the Information Services Section, Australian Bureau of Statistics, Box 2796Y, G.P.O., Melbourne, 3001, phone (03) 63 0181.

All publications issued by the ABS are contained in the *Catalogue of Publications* (1101.0), which is available from any ABS Office. A list of publications issued by the Victorian Office of the ABS is shown in APPENDIX E of this *Year Book*.

INTRODUCTION BY THE GOVERNOR OF VICTORIA

November 19, 1984, begins twelve months of celebrations for Victoria's 150th Anniversary. It celebrates a year in which Edward Henty, John Batman, and John Pascoe Fawkner made settlements at Portland and Melbourne. They laid the foundations of a State which to we Victorians today is cosmopolitan, beautiful, diversified, and progressive.

During those 150 years, growth has been rapid and Victoria's achievements remarkable. There are particular reasons for the State's rapid progress. On the one hand there is the legacy of British institutions and culture which provide a solid foundation for experiment and innovation. On the other, is the energy and inventiveness of its people who have come from all over the world. Their diversity of culture and experience has continually enriched all aspects of life. In addition, the country possesses a temperate climate, fertile soil for agriculture and grazing, and has yielded fabulously rich gold and mineral deposits.

While settlers of all nationalities dominate Victoria's history, their strong sense of "Growing Together", and their real enthusiasm for an indigenous culture have led to Victoria's splendid achievements in education, science, arts, law, building, and business.

This special 150th Anniversary edition of the *Victorian Year Book* provides a factual and statistical record of the State's growth and development. It celebrates a proud, golden past as "Australia Felix". It heralds a future in which Victoria's shining achievements will continue to enhance world history.



HIS EXCELLENCY REAR ADMIRAL
SIR BRIAN STEWART MURRAY,
K.C.M.G., A.O., K.St.J.

Governor of Victoria

INTRODUCTION BY THE PREMIER OF VICTORIA

In its first 150 years of European development, Victoria has developed from one family of squatter settlers to a flourishing modern State which has attracted immigrants from all over the world. From 1834 until the discovery of gold in 1850, settlement was largely pastoral and the strength of this pastoral economy enabled Victoria to separate from New South Wales in 1851. In the ten years after the commencement of the gold rush, the population increased from 77,345 to 540,322. This influx of new arrivals was to lead Victoria into a period of rapid development and natural population increase, and it was appropriate that this was recognised by Federation in 1901 when Victoria became one of the six States making up the Commonwealth of Australia.

In celebrating its 150th Anniversary, Victoria can look back on a period of rapid development, and of hardships overcome when the solid foundation of present society was laid. Our citizens come from countries all over the world, some with civilizations thousands of years old, yet are prepared to join proudly in Victoria's 150th Anniversary. The Anniversary of a young State is an exciting event where people can feel that they have actually made vital contributions to change and development and can witness the maturing processes of the State. The very arrival of so many post-war settlers has occasioned significant changes in government policy and in service delivery which have had to expand to accommodate linguistic and cultural differences.

Side by side with the conscious improvements made to assist successful settlement of recent arrivals has been the awakening consciousness of the rights of the Aborigines, the descendants of the first people to settle in Victoria. Their long neglected problems are gradually being appropriately handled — the greatest improvement being that Aborigines themselves are now instigating and directing their own affairs.

The 150th Anniversary of Victoria is a time to pause and look at the successes and failures of the past and to apply all knowledge gained to the directions of the future. We already have a society in which many nationalities happily coexist despite considerable initial settlement problems and in which Victoria's original inhabitants are gaining deserved recognition. The official theme "Growing Together" of Victoria's 150th Anniversary in fact already happens here. We must all work to ensure it continues and be prepared to face the challenges of the future together.



THE HON. JOHN CAIN, M.P.
Premier of Victoria

FOREWORD

This, the 98th edition of the *Victorian Year Book*, is a special edition marking the sesquicentenary of permanent European settlement in Victoria. It is complementary to the special 1973 edition which commemorated the publication of the first *Victorian Year Book* in 1873 and covered the development of the State from the first settlement to the early 1970s. This volume concentrates on the third 50 years of Victoria's history — from the centenary celebrations in 1934 to the early 1980s. An overview of the first 100 years of permanent European settlement is given in the Prologue.

The Australian Bureau of Statistics, as the central statistical authority for the Commonwealth Government, provides statistical services for the State Governments, under agreements between the Commonwealth and the States. As part of this responsibility it produces the *Victorian Year Book*, which seeks to present a comprehensive statistical and descriptive account of Victoria. While the descriptive material in the 1984 *Victorian Year Book* does not contain critical analysis and assessments, most of it has been written by authors whose knowledge of the period was, for the most part, both personal and authoritative, although views expressed in contributed material do not necessarily represent the views of the Australian Bureau of Statistics. The text has, as far as possible, been updated to March 1983.

The completion of this large task has been made possible only by the help, encouragement, and specific assistance of the many persons and institutions listed in the Acknowledgements. I wish particularly to acknowledge the support of Sir John Dillon who was the chief consultant for the project. I also wish to record my appreciation to the staff of the Victorian Office of the Australian Bureau of Statistics who have contributed to the production of this *Year Book*. In particular I am grateful for the efforts of Mr H. L. Speagle who, as Editor of Publications, in 1976 initiated the concept and guided this sesquicentenary volume through its long gestation period, and Mr W. M. Chamberlain, who became Editor in April 1983.

Mr Speagle was Editor of the *Victorian Year Book* from the time of integration of the statistical services of the State and the Commonwealth in 1958 until his retirement in April 1983. In 1961 the first *Victorian Year Book* under his editorship adopted a new format, with expanded text, illustrations, and maps, that has been maintained ever since. He also commissioned special articles on aspects of Victoria's physical environment and other topics. In paying this tribute to Mr Speagle it may be said that he set a high standard for such publications throughout Australia over the last quarter century, and made a lasting contribution to the statistical recording of Victoria.

ERLE BOURKE
Deputy Commonwealth Statistician

CONTENTS

| | |
|--|-----------|
| General information | |
| <i>Symbols · Other forms of usage · Availability of ABS publications</i> | |
| Introduction by the Governor of Victoria | |
| Introduction by the Premier of Victoria | |
| Foreword | |
| Acknowledgements | |
| | |
| PROLOGUE | 1 |
| Victoria's centenary celebrations | 1 |
| Early exploration from 1788 | 2 |
| <i>Early Aboriginal contacts 3 · Early nineteenth century exploration 4 · Aboriginal reactions to settlement 5</i> | |
| Developments to the 1870s | 6 |
| <i>Early settlement of Melbourne 6 · Gold discoveries and their immediate effects 6 · "Unlocking the lands" 7 · Manufacturing industry 8</i> | |
| Developments from the 1870s to the 1890s | 8 |
| <i>Aboriginals after the 1850s, 9 · End of prosperity 10</i> | |
| Move towards Federation | 10 |
| <i>Effects of Federation on Victoria 11 · First decade of Federation 12</i> | |
| First World War | 12 |
| <i>Effects of First World War: The 1920s, 14</i> | |
| Closer land settlement | 14 |
| Political developments in the 1920s | 16 |
| Growth of Melbourne | 17 |
| <i>Economic growth in the 1920s, 17</i> | |
| The Depression | 18 |
| <i>Premiers' Plan and aftermath 20 · Argyle Government and effects of the Depression 21</i> | |
| | |
| 1 VICTORIA FROM 1935 TO 1939 | 24 |
| Dunstan Government | 24 |
| Agriculture | 25 |
| Manufacturing | 26 |
| Social problems | 28 |
| Housing | 29 |
| Education | 30 |
| Outbreak of the Second World War | 32 |

| | | |
|---|---|----|
| 2 | VICTORIA AT WAR, 1939 TO 1945 | 33 |
| | Introduction | 33 |
| | Military aspects | 33 |
| | Political aspects | 35 |
| | Economic aspects | 36 |
| | Social aspects | 38 |
| | The years since | 40 |
| | <i>Repatriation 40 · Post-war reconstruction 40</i> | |
| 3 | STATISTICAL SERVICES | 42 |
| | Introduction | 42 |
| | Office of the Government Statist, 1934 to 1958 | 42 |
| | Commonwealth Bureau of Census and Statistics, 1945 to 1958 | 44 |
| | Integrated statistical services, 1959 to 1983 | 45 |
| | <i>Introduction 45 · Economic statistics 46 · Social statistics 47 · Computing facilities 47 · Victorian Year Book 48</i> | |
| | Conclusion | 48 |
| 4 | NATURAL ENVIRONMENT | 49 |
| | Introduction | 49 |
| | Nature conservation movement | 49 |
| | <i>Background 49 · From 1934 to 1939, 49 · From 1939 to 1945: the Second World War 50 · From 1945 to 1955, 51 · From 1955 to 1965, 52 · From 1965 to 1975, 53 · Since 1975, 56</i> | |
| | The Royal Society of Victoria | 56 |
| | Royal Botanic Gardens and National Herbarium | 57 |
| | Municipal gardens | 60 |
| | Horticultural education | 61 |
| | Horticulture as recreation | 62 |
| | National Museum of Victoria | 62 |
| | <i>Introduction 62 · Trustees 62 · Exhibits and education 63 · Collections 64 · Research 64</i> | |
| | Bureau of Meteorology | 65 |
| | <i>Before the Second World War 65 · Wartime arrangements 65 · Post-war developments 66 · New technologies 67</i> | |
| | Antarctica | 68 |
| 5 | GOVERNMENT AND ADMINISTRATION | 70 |
| | Introduction | 70 |
| | Constitution | 70 |
| | <i>Constitutional developments 70 · Australian Constitutional Convention 71</i> | |
| | Royal events since 1934 | 72 |
| | The Governors of Victoria and their representation of the Crown since 1934 | 72 |
| | <i>The office of Governor 72 · Lord Huntingfield 74 · Sir Winston (later Lord) Dugan 75 · Sir Dallas Brooks 76 · Sir Rohan Delacombe 77 · Sir Henry Winneke 78 · Sir Brian Murray 78</i> | |
| | <i>Lieutenant-Governors 79</i> | |
| | Parliament of Victoria | 79 |
| | <i>Elections and financial legislation 79 · Parliamentary privilege 80 · Parliamentary Committees 80 · Joint Sittings 80 · Members' interests 81 · Question Time 81 · Sessional Orders 81</i> | |

| | |
|---|------------|
| Victorian Premiers since 1934 | 81 |
| <i>Background 81 · Stanley (later Sir Stanley) Seymour Argyle 81 · Albert (later Sir Albert) Arthur Dunstan 82 · Ian Macfarlan 83 · John Cain 83 · Thomas (later Sir Thomas) Tuke Hollway 84 · John (later Sir John) Gladstone Black McDonald 85 · Henry (later Sir Henry) Edward Bolte 85 · Rupert (later Sir Rupert) James Hamer 86 · Lindsay Hamilton Simpson Thompson 87 · John Cain 88</i> | |
| Ombudsman | 88 |
| Statutes and regulations | 89 |
| Victorian electoral system | 90 |
| <i>Qualifications of Members 90 · Redistribution 91 · Conduct of elections 92 · Re-counting of ballot-papers 92</i> | |
| Executive government | 93 |
| <i>Government administration and departmental developments 95</i> | |
| Commonwealth-State relationships | 98 |
| <i>Effects of Commonwealth legislation 98 · Conclusion 101</i> | |
| Victorian representation in the Commonwealth Parliament since 1934 | 101 |
| <i>Representation—Constitutional and legal provisions 101 · House of Representatives — redistribution and representation 102</i> | |
| Commonwealth electoral law since 1934 | 103 |
| <i>Method of voting and scrutiny 103 · Senate casual vacancies 104 · Voting age 104</i> | |
| Election and referendum statistics | 104 |
| <i>Elections 104 · Referendums 105</i> | |
| | |
| 6 LOCAL GOVERNMENT | 106 |
| Introduction | 106 |
| Municipal system in 1934 | 106 |
| <i>Structure and organisation 106 · Extension of municipal powers and responsibilities 107 · Role of local government 107 · Gradual involvement in new services 109 · Impact of the Depression 110</i> | |
| Developing municipal role, 1934 to 1939 | 110 |
| <i>Consolidation and recovery 110</i> | |
| Second World War, 1939 to 1945 | 112 |
| Post-war developments | 112 |
| Major expansion of local government | 115 |
| <i>Social and welfare services 115 · Urban planning 118 · Community facilities 118 · Financial problems 119</i> | |
| Commission of Inquiry into Local Government, 1959 to 1962 | 121 |
| Board of Inquiry into Local Government Finance in Victoria, 1970 to 1972 | 123 |
| Commonwealth general revenue assistance to local government | 125 |
| Constitutional recognition of local government in Victoria | 127 |
| Emerging system—the final report of the Board of Review of the Role, Structure, and Administration of Local Government in Victoria | 128 |
| | |
| 7 DEMOGRAPHY | 131 |
| Introduction | 131 |
| Historical background | 131 |
| Population Census | 133 |
| <i>Population of the States and Territories 137</i> | |

| | |
|---|------------|
| Immigration | 137 |
| <i>Introduction 137 · History of immigration policy 139 · Internal migration 140 ·</i> | |
| Births, deaths, marriages, and divorces | 141 |
| <i>Background 141 · Crude birth and marriage rates 142 · Births 143 · Deaths 146 ·</i> | |
| <i>Marriages 149 · Divorces 153</i> | |
| Age distribution and masculinity | 156 |
| Birthplace | 158 |
| Marital status | 161 |
| Religion | 162 |
| Qualifications | 163 |
| Industry and occupation | 164 |
| Urbanisation | 167 |
| <i>Introduction 167 · Urban centres 168 · Melbourne Statistical Division and statistical</i> | |
| <i>districts of Victoria 170</i> | |
| 8 ABORIGINALS | 171 |
| Introduction | 171 |
| Problems of statistics and perceptions of Aborigines | 171 |
| <i>1967 Referendum and subsequent Censuses 172</i> | |
| Aborigines in 1934 | 173 |
| Second World War | 174 |
| McLean Report and assimilation | 174 |
| Aborigines Welfare Board, 1958 to 1967 | 175 |
| Victorian Ministry of Aboriginal Affairs, 1968 to 1974 | 176 |
| Transfer of Aboriginal affairs to the Commonwealth in 1975 | 177 |
| Aboriginal affairs in Victoria since 1975 | 178 |
| <i>Land Rights 178 · Lake Tyers and Framlingham 179 · The Portland Case 179 ·</i> | |
| <i>Victoria Archaeological Survey 179 · Aboriginal social services 180</i> | |
| Conclusion | 180 |
| 9 INDUSTRIAL CONDITIONS | 181 |
| Introduction | 181 |
| Industrial regulation | 182 |
| <i>Jurisdiction 182</i> | |
| Industrial organisations | 185 |
| <i>Overview 185 · Trade unions 185 · Employer associations 187</i> | |
| Industrial disputes | 189 |
| <i>Introduction 189 · Evaluation of disputes 189 · Trends in disputes 190</i> | |
| Wage rates and earnings | 192 |
| <i>Introduction 192 · Basic wage 1934 to 1967, 192 · Basic wage inquiries 193 · Margins</i> | |
| <i>194 · Total wage 194 · Indexation 1975 to 1983, 195</i> | |
| Women's wages | 197 |
| Victorian wage determinations | 198 |
| Wage rates | 198 |
| Average weekly earnings | 200 |
| Hours of work | 201 |
| Leave provisions | 203 |
| <i>Annual leave 203 · Long service leave 203 · Sick leave 204 · Maternity/paternity leave</i> | |
| <i>204 · Equality of opportunity 204 · Public holidays 205 · Bereavement leave 205</i> | |
| Occupational safety, health, and welfare | 205 |
| <i>Introduction 205 · Safety 205 · Health 206 · Workers compensation 206</i> | |

| | | |
|----|--|-----|
| 10 | EMPLOYMENT AND UNEMPLOYMENT | 208 |
| | Introduction | 208 |
| | Recovery from the Depression | 208 |
| | War years, 1939 to 1945 | 211 |
| | Post-war recovery, 1945 to 1949 | 214 |
| | <i>Immigration</i> 214 | |
| | Establishment of the Commonwealth Employment Service | 215 |
| | Sustained economic growth, 1950 to 1970 | 216 |
| | Employment and unemployment since the 1970s | 217 |
| | <i>Manpower and training schemes</i> 225 | |
| | Trends in female employment, 1934 to 1983 | 226 |
| | <i>Employment anti-discrimination provisions</i> 227 | |
| | Expansion of employment services | 227 |
| 11 | HOUSING, BUILDING, AND CONSTRUCTION | 228 |
| | Introduction | 228 |
| | 1934 to 1939, post-depression era | 228 |
| | 1939 to 1951, era of material shortages | 230 |
| | 1950s and 1960s, methods and materials | 234 |
| | <i>Houses</i> 234 · <i>Flats</i> 235 | |
| | 1970s and early 1980s, housing and lifestyle | 236 |
| | Building legislation and municipal responsibilities | 239 |
| | Planning | 241 |
| | Planning and the City of Melbourne | 243 |
| | Housing Commission | 245 |
| | <i>Social effects of Housing Commission policies</i> 246 | |
| | Regional authorities | 246 |
| | Preservation | 247 |
| | Private sector construction | 249 |
| | Public sector construction | 249 |
| 12 | ENERGY AND MINERALS | 252 |
| | Introduction | 252 |
| | Energy | 252 |
| | <i>Background</i> 252 · <i>Electricity</i> 253 · <i>Gas and fuel</i> 260 · <i>Liquid fuels</i> 264 · <i>Developments in energy since 1970</i> , 270 | |
| | Minerals | 270 |
| | <i>Gold</i> 270 · <i>Black coal</i> 271 · <i>Brown coal</i> 271 · <i>Other minerals</i> 272 · <i>Construction material</i> 272 · <i>Mineral exploration</i> 273 | |
| 13 | WATER RESOURCES | 274 |
| | Introduction | 274 |
| | Historical outline | 274 |
| | <i>Agricultural development</i> 274 · <i>Melbourne metropolitan development</i> 275 · <i>General developments</i> 278 · <i>Changes to the Melbourne and Metropolitan Board of Works</i> 279 · <i>Changes to the State Rivers and Water Supply Commission</i> 279 · <i>Commonwealth—State relations</i> 279 · <i>Environmental concerns</i> 280 | |
| | Urban water supply | 280 |
| | <i>Melbourne metropolitan area</i> 280 · <i>Outer Melbourne metropolitan areas and country towns</i> 286 | |

| | |
|--|------------|
| Rural water supply | 287 |
| <i>Closer settlement 287 · Royal Commission on Water Supply, 1936, 288 · Soil conservation 288 · Millewa pipeline 289 · Water storage construction 289 · Improvements in water distribution 292 · Chowilla and Dartmouth Dams 292 · Irrigation expansion after the Second World War 293 · Developments in administration and finance 293 · Salinity and drainage 294</i> | |
| Sewage and wastewater disposal | 296 |
| <i>Melbourne metropolitan area 296 · Outer Melbourne metropolitan areas and country towns 298 · Treatment processes 298</i> | |
| River improvement, regional drainage, and flood plain management | 299 |
| <i>River improvement 299 · Regional drainage and flood plain management 300</i> | |
| 14 FORESTRY | 303 |
| Introduction | 303 |
| Developments in forestry since 1934 | 303 |
| <i>1934 to 1939, 303 · 1940 to 1945, 308 · 1946 to 1956, 310 · 1957 to 1960, 312 · 1961 to 1970, 314 · Since 1971, 318</i> | |
| 15 FISHERIES AND WILDLIFE | 324 |
| Introduction | 324 |
| Management and legislation | 325 |
| Preserving the habitat | 325 |
| Public participation in conservation | 325 |
| Developments in fisheries and wildlife | 327 |
| <i>From 1934 to 1943, 327 · From 1944 to 1953, 328 · From 1954 to 1963, 330 · From 1964 to 1973, 332 · From 1974 to 1982, 333</i> | |
| Commercial fisheries | 340 |
| 16 AGRICULTURE | 342 |
| Introduction | 342 |
| 1934 to 1939: Recovery from the Depression | 343 |
| <i>Livestock 345 · Crops 346 · Horticulture 347</i> | |
| The 1940s: Wartime shortages and post-war developments | 348 |
| <i>1939 to 1945, 348 · Rural reconstruction 349 · Post-war developments 349 · Livestock 351 · Crops 352 · Horticulture 352</i> | |
| The 1950s: Mechanisation, pasture improvement, and "golden" wool | 353 |
| <i>Wool 353 · Livestock 355 · Crops 356 · Horticulture 356</i> | |
| The 1960s: Productivity rise, product handling improvement, and drought | 357 |
| <i>Livestock 358 · Crops 361 · Horticulture 361</i> | |
| The 1970s and early 1980s | 362 |
| <i>Livestock 363 · Crops 366 · Horticulture 367 · Recent agricultural developments 368</i> | |
| Conclusion | 369 |
| 17 MANUFACTURING | 371 |
| Introduction | 371 |
| 1935 to 1939 | 373 |
| 1939 to 1946 | 374 |
| 1946 to 1968 | 376 |
| <i>Background 376 · Motor vehicle industry 377 · Petroleum industry 378 · Energy 379 · Geographical distribution and decentralisation 379</i> | |
| 1969 to 1982: Beginnings of change | 381 |
| Conclusion | 390 |

| | | |
|----|--|-----|
| 18 | INTERNAL TRADE | 391 |
| | Introduction | 391 |
| | Retailing | 392 |
| | <i>Historical background 392 · General conditions in retailing 393 · Transport 394 · Development of shopping centres 394 · Self-selection and self-service 395 · Discount stores 397 · Distribution and range of goods 398 · Advertising 399 · Shopping hours 400 · Finance facilities 400 · Consumer protection 401 · Management and administration 401</i> | |
| 19 | EXTERNAL TRADE | 403 |
| | Introduction | 403 |
| | Interstate trade | 403 |
| | <i>State bases of export statistics 403</i> | |
| | Overseas trade | 405 |
| | <i>The mid-1930s to the mid-1940s, 405 · The mid-1940s to the mid-1950s, 407 · The mid-1950s to the mid-1960s, 408 · The mid-1960s to the mid-1970s, 410 · Since the mid-1970s, 411</i> | |
| | Victoria's overseas representation | 412 |
| 20 | PUBLIC FINANCE | 414 |
| | Introduction | 414 |
| | 1934 to 1939 | 414 |
| | 1939 to 1945 | 416 |
| | 1945 to 1952 | 420 |
| | 1952 to 1962 | 423 |
| | 1962 to 1972 | 427 |
| | <i>Financial assistance 428 · State taxation 429 · Loan funds and debt charges 430</i> | |
| | 1972 to 1982 | 431 |
| | <i>State expenditure 432 · State taxation 433 · Commonwealth grants 435 · Commonwealth—State relations 436</i> | |
| 21 | PRIVATE FINANCE | 444 |
| | Introduction | 444 |
| | Central banking | 444 |
| | Committee of Inquiry into the Australian Financial System | 447 |
| | Trading and savings banks | 447 |
| | <i>Introduction 447 · Banking mergers 447 · Banking from 1934 to 1950, 448 · Banking from 1951 to 1970, 449 · Banking from 1971 to 1982, 451</i> | |
| | Finance companies | 451 |
| | <i>Introduction 451 · Developments 452 · Consumer loans 453 · Commercial loans 454 · Borrowing operations 454 · Conclusion 454</i> | |
| | Short-term money market and the merchant banks | 454 |
| | Stock Exchange of Melbourne | 456 |
| | Statutory trustee companies | 459 |
| | Pastoral houses | 460 |
| | Life insurance | 460 |
| | <i>Structure 460 · Products and marketing 461 · Investment 461 · Regulation 462</i> | |
| | Superannuation | 464 |
| | <i>Background 464 · State Superannuation Board 464</i> | |

| | | |
|----|--|-----|
| | General insurance | 465 |
| | <i>Background 465 · Workers compensation 465 · Motor car insurance 466 · Catastrophes 466 · Professional bodies 466</i> | |
| | Friendly societies | 467 |
| | Credit unions | 468 |
| | Building societies | 468 |
| 22 | PRICES | 470 |
| | Introduction | 470 |
| | Retail price indexes | 470 |
| | Price controls, 1939 to 1954 | 473 |
| | Prices after the Second World War | 474 |
| | Long-term price movements | 479 |
| | Wholesale price indexes | 480 |
| 23 | TRANSPORT | 485 |
| | Introduction | 485 |
| | Land transport | 485 |
| | <i>1934 to 1939, 485 · The 1940s, 488 · The 1950s, 489 · The 1960s, 491 · Since the 1970s, 492</i> | |
| | Sea transport | 502 |
| | <i>Introduction 502 · Conditions in 1934, 502 · Major ports 503</i> | |
| | Air transport | 508 |
| | <i>Development 508 · Developments in airports and cargo services 511 · Administrative changes 512</i> | |
| 24 | COMMUNICATIONS | 513 |
| | Introduction | 513 |
| | 1934 to 1939, pre-war years | 513 |
| | <i>Communications after the Depression 513 · Technical developments 514</i> | |
| | 1939 to 1945, the War years | 515 |
| | <i>Mail arrangements 515 · Telegrams 518 · Voluntary war efforts 519 · Personnel 519 · Wartime restrictions 519 · Works and equipment 519 · End of hostilities 520</i> | |
| | 1946 to 1958, post-war developments | 521 |
| | <i>General 521 · Royal Visit, 1954, 521 · Olympic Games, 1956, 522 · Introduction of black and white television 522</i> | |
| | 1959 to 1969, technical developments | 522 |
| | <i>Background 522 · Moon landing 523 · Colour television 524</i> | |
| | 1970 to 1975, postal and telecommunications developments | 524 |
| | <i>Postal techniques 524 · New administration of postal and telecommunication services 524</i> | |
| | Since 1975, postal and telecommunications developments | 525 |
| | <i>General 525 · Internal re-organisation and re-structuring of mail network 525 · Developments in postal services 525 · Telecommunications facilities 526</i> | |
| | Stamp issues | 528 |
| 25 | EDUCATION | 530 |
| | Introduction | 530 |
| | General background | 530 |
| | <i>Demographic aspects 530 · Social aspects 532</i> | |
| | Pre-school education | 533 |

| | |
|---|-----|
| Major developments in government schools | 535 |
| <i>1934 to 1944, 535 · 1945 to 1959, 536 · 1960 to 1969, 537 · 1970 to 1982, 538</i> | |
| Primary education | 540 |
| Post-primary education | 541 |
| High schools | 542 |
| Technical schools | 543 |
| Curricula | 543 |
| Special education and special services | 546 |
| Non-government schools: Catholic education | 547 |
| <i>Developments since 1934, 547 · Developments in the 1970s, 549 · Government funding 550 · Secondary staffing report 551 · Teacher development 551 · Building 552</i> | |
| Non-government schools: Non-Catholic | 552 |
| Technical and further education | 556 |
| Tertiary education | 557 |
| Adult education | 560 |
| | |
| 26 HEALTH AND MEDICAL RESEARCH | 562 |
| Introduction | 562 |
| Mortality and morbidity | 562 |
| Commonwealth Government health services | 568 |
| Victorian Government health services | 570 |
| <i>Public health 570</i> | |
| Development and planning of hospital services | 571 |
| <i>Historical background 571 · Public hospital beds 571 · Rationalisation of hospital services 572 · Management 573</i> | |
| Institutional health care | 573 |
| <i>Geriatric institutions 573 · Mental health 574 · Survey of Handicapped Persons 575 · Rehabilitation 576</i> | |
| Medical practice | 576 |
| Community Health Programme | 577 |
| Medical research | 578 |
| Surgery | 579 |
| Obstetrics | 580 |
| Anaesthesia | 582 |
| Pharmacy | 582 |
| Substance addiction and abuse | 583 |
| Dentistry | 585 |
| Nursing | 586 |
| | |
| 27 SOCIAL WELFARE | 589 |
| Introduction | 589 |
| Concepts of social welfare | 590 |
| Commonwealth Government welfare services | 591 |
| <i>Development of income security services 591 · Commonwealth Department of Social Security 598 · Commonwealth Department of Veterans' Affairs 598 · Direct social services 600</i> | |
| Victorian welfare services | 601 |
| <i>Victorian Government welfare administration 601 · Family and community services 601 · Voluntary agencies 603</i> | |

| | |
|---|-----|
| Ethnic welfare services | 604 |
| Services for groups with special needs | 605 |
| <i>Background 605 · Specific services for particular disabilities 607</i> | |
| Statutory services for young persons | 608 |
| <i>Introduction 608 · Children 608 · Young offenders 610 · Youth welfare 611</i> | |
| Correctional services | 611 |
| <i>Introduction 611 · Penal reform 611 · Prisons 612</i> | |
| Social welfare personnel | 614 |
| | |
| 28 JUSTICE AND THE ADMINISTRATION OF LAW | 616 |
| Introduction | 616 |
| Changing patterns of legal control | 616 |
| <i>Family law 617 · Consumer protection 617 · Environmental protection 618 · Restrictive trade practices 618 · Accident compensation legislation 618 · Administrative law 619 · Recent developments 619</i> | |
| Law reform | 619 |
| <i>Background 619 · Statute Law Revision Committee 620 · Legal and Constitutional Committee 620 · Chief Justice's Law Reform Committee 620 · Law Reform Commissioner 621 · Victoria Law Foundation 621 · Conclusion 622</i> | |
| Criminal law | 622 |
| <i>Introduction 622 · Homicide 622 · Theft 623 · Criminal damage 623 · Sexual offences 623 · Criminal penalties 623 · Compensation for victims of crime 624</i> | |
| The Courts | 624 |
| <i>Background 624 · Supreme Court 626 · State and Federal jurisdictions 627 · Appeals to the Privy Council 627 · County Court 627</i> | |
| Legal profession | 628 |
| <i>The Bar 628 · Solicitors 630</i> | |
| Victoria Police | 631 |
| <i>Introduction 631 · Police role 631 · Operational concepts 632 · Objectives 632 · Criminal investigation 633 · Women police 633</i> | |
| Law Department | 633 |
| <i>Legislative changes 635</i> | |
| Legal aid | 636 |
| Legal education | 636 |
| | |
| 29 FINE ARTS, LIBRARIES, AND MEDIA | 638 |
| Introduction | 638 |
| Background to the visual arts | 638 |
| <i>From 1934 to 1939, 638 · Second World War 639 · After 1945, 639</i> | |
| Background to the performing arts | 641 |
| Artistic developments | 643 |
| <i>Painting 643 · Sculpture 645</i> | |
| Development of the National Gallery of Victoria and the Victorian Arts Centre | 646 |
| <i>National Gallery of Victoria 646 · Victorian Arts Centre 647</i> | |
| Teaching of art history and appreciation | 647 |
| Training of artists | 648 |
| Ministry for the Arts | 649 |
| Victorian Arts Council | 649 |
| <i>National Gallery of Victoria 646 · Victorian Arts Centre 647</i> | |

| | |
|---|------------|
| Teaching of art history and appreciation | 647 |
| Training of artists | 648 |
| Ministry for the Arts | 649 |
| Victorian Arts Council | 649 |
| National Trust of Australia (Victoria) | 650 |
| Werribee Park | 650 |
| Crafts | 651 |
| Developments in performing arts | 651 |
| <i>Music 651 · Drama 653 · Ballet and dance 655 · Opera 656</i> | |
| Cinema | 658 |
| <i>Introduction 658 · Cinema-going 659 · Feature film production 659 · Victorian Government involvement in films 660</i> | |
| Radio and television | 661 |
| <i>Radio before the advent of television in 1956, 661 · Television era, 1956 to the 1970s, 662 · Impact of television on radio 662 · Television programmes 663</i> | |
| Recent developments in broadcasting and television | 663 |
| <i>Introduction of colour television and FM radio 663 · New developments 664</i> | |
| Libraries | 664 |
| <i>Munn-Pitt Report 664 · Free Library Services Board 665 · Library Council 666</i> | |
| Public Record Office | 667 |
| Victorian writing | 668 |
| Book publishing | 671 |
| Press in Victoria | 672 |
| <i>Introduction 672 · The Herald and The Sun News-Pictorial 673 · The Age 674 · The Argus and Australasian 675 · Other dailies 675 · Non-dailies 675 · Country and suburban press 676</i> | |
| 30 SPORT AND LEISURE | 677 |
| Introduction | 677 |
| General patterns of sport and leisure | 677 |
| Sport | 680 |
| <i>Competition 680 · Membership patterns 681 · Equipment 682 · Administration 682 · Media 682</i> | |
| Commercialism in sport | 683 |
| <i>Sponsorship 685</i> | |
| Sport as entertainment | 685 |
| Involvement of government and “umbrella” organisations in sport and recreation | 686 |
| Special groups in sport and recreation | 687 |
| <i>Juniors 687 · Veterans 688 · Disabled groups 688</i> | |
| Conclusion | 689 |
| | |
| EPILOGUE | 690 |
| APPENDICES | 691 |
| A Historical statistics | |
| <i>Demography 691 · Agriculture 698 · Mining 706 · Manufacturing 708 · Building 710 · Industrial conditions 711 · Education 712 · Health 718 · Transport 720 · Communications 726</i> | |
| B Brief chronology of important events, 1770 to 1982 | 728 |
| Chronology of important events, 1983 | 736 |

| | |
|---|---------|
| Representatives of the Sovereign: Victoria, 1839 to 1982 | 740 |
| Ministries since responsible government: Victoria, 1855 to 1982 | 741 |
| The Melbourne Cup: 1861 to 1983 | 743 |
| Victorian Football League grand finalists: 1897 to 1983 | 744 |
| Australia's record in Test Matches at the Melbourne Cricket Ground, 1876-77 to 1983-84 | 745 |
| Summary of Australia's results in Test Matches at the Melbourne Cricket Ground, 1876-77 to 1983-84 | 746 |
| C Index of special articles in <i>Victorian Year Books</i> , 1961 to 1983 | 747 |
| D Index of maps in <i>Victorian Year Books</i> , 1961 to 1983 | 760 |
| E Victorian statistical publications | 763 |
| <i>Introduction 763 · Description of publications 763</i> | |
| F Select bibliography of Victoria | 771 |
| <i>General reference works 771 · Biography 771 · History and description 773 · Victorian gold rushes 776 · Aboriginals 777 · Economic history, social conditions, etc. 778 · Church history 780 · Natural history 781 · The Arts and architecture 782 · Sport 784</i> | |
| INDEX | 786 |
| FIGURES | |
| 1 Victoria—Number of births and deaths registered and natural increase, 1935 to 1982 | 132 |
| 2 Victoria—Census counts of the population by sex, 1933 to 1981 | 133 |
| 3 Victoria—Mobility rates of males and females aged 15 years and over, year ended 30 June 1982 | 140 |
| 4 Victoria—Number of births registered, 1935 to 1982 | 143 |
| 5 Victoria—Number of deaths registered, 1935 to 1982 | 146 |
| 6 Victoria—Number of marriages registered, 1935 to 1982 | 149 |
| 7 Victoria—Number of divorces (decrees granted), 1935 to 1982 | 154 |
| 8 Victoria—Age/sex pyramids of the population at Censuses held in 1933, 1961, and 1981 | 157 |
| 9 Victoria—Census counts of the population by birthplace, 1933 to 1981 | 160 |
| 10 Victoria—Number of industrial disputes, 1913 to 1982 | 189 |
| 11 Victoria—Working days lost per 1,000 employees, 1941 to 1981 | 191 |
| 12 Victoria—Unemployment rates, 1930 to 1983 | 209 |
| 13 Victoria—Employed persons by occupation, 1971 to 1983 | 219 |
| 14 Victoria—Employed persons by industry, 1971 to 1983 | 221 |
| 15 Victoria—Rainfall districts | 277 |
| 16 Victoria—Median annual rainfall | 282 |
| 17 Victoria—Rainfall for the year 1978, representing a “wet” year | 283 |
| 18 Victoria—Rainfall for the year 1982, representing a “dry” year | 284 |
| 19 Victoria—Major fires, Black Friday, 1939 | 306 |
| 20 Victoria—Major fires, Ash Wednesday, 1983 | 307 |
| 21 Victoria—State wildlife reserves, 1982 | 335 |
| 22 Australia and Victoria—Gross value of agricultural commodities produced (excluding mining), 1934-35 to 1981-82 | 343 |
| 23 Victoria—Number of horses and tractors on establishments with agricultural activities, 31 March 1935 to 1970 | 350 |

| | | |
|----|--|-----|
| 24 | Australia and Victoria—Persons employed in all manufacturing establishments, 1934-35 to 1981-82 | 376 |
| 25 | Victoria—Percentage of males and females employed in the retail trade and the labour force, 1957 to 1974 | 397 |
| 26 | Victoria—Instalment credit for retail sales, 1960 to 1980 | 400 |
| 27 | Australia—Total assets of financial institutions, year ended 30 June 1953 to 1980 | 445 |
| 28 | Melbourne—"A" Series Retail Price Index, year ended 31 December 1901 to 1938 | 471 |
| 29 | Melbourne—"C" Series Retail Price Index, year ended 31 December 1921 to 1961 | 472 |
| 30 | Melbourne—Consumer Price Index, All Groups, year ended 30 June 1949 to 1982 | 476 |
| 31 | Melbourne—Average retail price of premium grade petrol, 1972 to 1983 | 477 |
| 32 | Australia—Retail Price Index Numbers, year ended 31 December 1901 to 1982 | 480 |

ILLUSTRATIONS

| | |
|--|-----------------------|
| Batman's treaty with the Aborigines | <i>front endpaper</i> |
| Melbourne skyline as viewed from Government House | <i>back endpaper</i> |
| The Henty landing at Portland in 1834 | <i>frontispiece</i> |
| Lieutenant-Colonel David Collins, William Dutton, Edward Henty, Portland in 1835, William Buckley, John Batman, John Pascoe Fawkner, Melbourne in 1836, Eureka Stockade, Sir Charles Hotham, Peter Lalor, The "Welcome Stranger" mine, Poseidon nugget, Echuca Railway Wharf, Pool of Melbourne, Old Post Office (Melbourne) 1853, Collins Street in the 1880s, Captain William Lonsdale, Opening of the first Commonwealth Parliament, Charles Joseph La Trobe, Fort Nepean, Archbishop Daniel Mannix, Sir John Monash, Police strike in 1923, Procession from the Shrine of Remembrance in 1934, Aviators C.W.A. Scott and T. Campbell Black, Eucharistic Congress of 1934 | <i>facing 1</i> |
| Second AIF marching through Melbourne in 1940, Wirraway aircraft production, Slit-trenches at Ripponlea State School, Comforts Fund Staff, American servicemen and Australian servicewomen at the Shrine of Remembrance | <i>facing 32</i> |
| Governors of Victoria since 1934, Premiers of Victoria since 1934, H.M. The Queen opening the Victorian Parliament in 1954, Lord Casey sworn in as Governor-General of Australia in 1965 | <i>facing 80</i> |
| Food parcels collection, Air raid wardens, H.R.H. The Duke of Gloucester, Sir Owen Dixon, Harold Holt memorial service, H.M. The Queen in Melbourne during 1980, H.M. The Queen with Sir Robert Menzies, T.R.H. The Prince and Princess of Wales at Sovereign Hill Historical Park, Law Courts and Police buildings at Horsham, County Court building in William Street, St Kilda Town Hall, | <i>facing 128</i> |

- Civic Centre of South Barwon, Civic buildings and Post Office at Maryborough, H.R.H. The Prince of Wales opening the Bourke Street Mall, The Bourke Street Mall, City Square, Vietnam War moratorium march, Central Tally Room at the Exhibition Building, Children's neighbourhood centres, Elderly Citizens Clubs
- Migrant reception centre, The passenger liner *Australis*, "Baby boom" *facing 160*
- Building workers protest march, Clarrie O'Shea, The 40 hour week decision, Conciliation and Arbitration Commission *facing 192*
- Yarra Boulevard in the 1930s, Soup kitchen of the 1930s, Unemployment in the 1980s, "Work Skills Olympics", Apprentices in training, Department of Social Security, Handicapped person at work *facing 208*
- Granny Flat, Adobe (mud brick) homes, St Paul's Cathedral Sidney Myer Music Bowl, West Gate Bridge collapse, Slum "shelters", High-rise flats, Pre-fabricated housing, View from Balwyn to the Dandenong Ranges, Housing development in South Melbourne, Capitol Theatre, Exhibition Building and Centennial Hall *facing 224*
facing 240
- Melbourne skyline, Regent Hotel, Sovereign Hill Mining Museum and township, "Hand of Faith" gold nugget, Bass Strait oil platform and drilling rig, Morwell open cut mine, Yallourn "W" Power Station, Dartmouth Dam, La Trobe Valley power station transmission lines, Solar powered vehicle, Box Hill Indoor Recreation Centre *facing 256*
- Werribee Farm, Wastewater Purification Plant near Carrum, Cardinia Reservoir, Dry-land salting, Upper Yarra Reservoir, River bank improvements, Eildon Reservoir, Early private dam construction, Thomson Dam, Flooding of the Burke Road Bridge at Kew in 1934, Soil erosion in the Mallee, Dust storm at Mildura *facing 288*
- Fire victims of "Black Friday", Macedon township after "Ash Wednesday" fires, Panton Hills bushfire of 1962, Snobs Creek Fish Hatchery, Dandenong Ranges, Firefighters at work, Firefighting techniques and equipment, Loading sawmill logs in State forest, Commercial fishing off Lakes Entrance, Circular saws at a hardwood mill, Re-stocking lakes and rivers with fish, Cape Schanck Coastal Park, Organ Pipes National Park *facing 320*
- Cape Barren Geese, Male Bustard, Serendip Wildlife Research Station, Royal Botanic Gardens, Vineyards in the Pyrenees Ranges, An apricot orchard near Shepparton, Irrigation channels, Pig farming, Sheep sale in the 1940s, Modern shearing shed, Early grain harvesting equipment, Modern harvesters, Stacking loose hay in the 1930s, Econ Roller hay collector and conventional hay bales, Land Army girls, Egg grading equipment *facing 352*

- International Harvester manufacturing plant, Alcoa smelting furnaces at Point Henry, Ford assembly plant at Broadmeadows, Yarn used for tyre manufacture, General Motors- Holden's engine plant, Fabric finishing at Bruck (Australia) Ltd, Fletcher Jones and Staff clothing factory, Shepparton Butter Factory, Canning peaches at Shepparton, Cheese factory equipment, Hot Strip Mill at Western Port, Alcoa aluminium smelter site, Altona Petrochemical Company, David Jones' Melbourne store *facing 384*
- Paper manufacturing, World Trade Centre official opening, CBA Banking Chamber, Statewide Building Society offices, Stock Exchange trading floor, Totalizator Agency Board branch, Bourke Street in the 1940s and 1950s, Coles store on opening day *facing 416*
- Chadstone Shopping Centre, Jack Dyer's milk bar, Myer "Star Bargains", Opening of the first free standing supermarket *facing 448*
- Essendon and Melbourne airports, First Ansett Airways and Trans Australia Airlines flights, Fokker Friendship aircraft, Boeing 767-200 jet, Airbus Industrie A 300 aircraft, Boeing 747B "Jumbo Jets", Electric trains since 1919, *Puffing Billy* Steam train, *Spirit of Progress* train, A "B" class locomotive, City trams, Melbourne metropolitan bus, Cargo handling at Swanson Dock, Passenger ships in the 1960s *facing 496*
- Postage stamps, Warrigal Road in 1938, "Autograde" equipment on the Hume Highway, Princes Freeway, Charcoal gas producer vehicle, Peak hour traffic in Spencer Street, City car parking space, An ABC broadcast of Sir Charles Kingsford-Smith and Charles Ulm at Flemington in 1934, Radio station control room, First international telephone call, Airmail being loaded on a Douglas DC2, Laying of a submarine telephone cable to Tasmania, Satellite television pictures, R. G. Menzies opening ABC-TV, Mount Dandenong transmitter masts, An International Manual Assistance Centre for telephone users, Microchip testing at Telecom, A coast radio operator *facing 512*
- Country school, Brunswick South-West Primary School, Students using a computer system, Junior school cricket, Kew High School, University of Melbourne, Menzies building at Monash University, Glendonald School for the Deaf, Fitzroy Primary School *facing 544*
- Preshil School, Emmaus College, State Library of Victoria, Museum of Victoria "Dinosaurs from China" exhibition, The Sunshine Harvester, Peter MacCallum Hospital, Royal Melbourne Hospital *facing 560*
- Chest x rays, Sunbury Community Health Centre, Sheltered workshop at Mornington, Red Cross display, Mission House at Fitzroy, Odyssey House, Morwell River Reforestation Prison, Handicapped children playing basketball *facing 592*

Works of art from the collections of the National Gallery of
Victoria

facing 640

Werribee Park, Performances of the Royal Melbourne Philharmonic Society and the Victorian State Opera Company, Grainger Museum, Sir Bernard Heinze, "Music for the People" at the Sidney Myer Music Bowl, Princess Theatre, Cast of the ABC-TV serial "Bellbird", *The Argus* building, *The Age* building in Collins Street, Typesetting a newspaper by hand, Ron Clarke carrying the Olympic torch, Melbourne Cricket Ground, Marathon "Fun runs", Children involved in the "Life. Be in it" campaign, Moomba Day procession, A cricket Test Match, International tennis competition at Kooyong, An Australian Rules football match

facing 672

ACKNOWLEDGEMENTS

The Australian Bureau of Statistics (ABS) is grateful to the following persons and institutions whose co-operation has made a substantial contribution to this book. At ABS's invitation they provided material, on an honorary basis, which has been incorporated with as little editing as is necessary to accord with ABS standards, style, etc.

GENERAL

N. Bowden
R. J. Cameron, C.B.
J. F. Clarke
The late I. M. Cowie
Sir John Dillon, C.M.G.
P. Fanning, M.B.E.
The Hon. Sir Rupert Hamer, K.C.M.G., E.D.
W. McLennan
J. Olesky
J. Paice
N. Quaintance
P. Singleton
H. L. Speagle, O.A.M.
The Hon. L. H. S. Thompson, C.M.G.

PROLOGUE

Dr J. Lack

CHAPTER 1:

VICTORIA FROM 1935 TO 1939

Dr J. Lack

CHAPTER 2:

VICTORIA AT WAR

W. M. Chamberlain
Dr L. L. Robson

CHAPTER 3:

STATISTICAL RESOURCES

V. H. Arnold
K. R. Blackburn
R. J. Brown
W. M. Chamberlain
The late I. M. Cowie
N. L. Dunstan
P. Lang
The late K. Martin
F. W. Sayer
J. Schornikow
C. Sims
E. Stockdale
G. Young

CHAPTER 4:

NATURAL ENVIRONMENT

C. Austin, C.B.E.
A. D. Butcher, C.M.G.
Dr D. M. Churchill
J. K. Dempster
Department of Crown Lands and Survey
Department of Science and Technology —
Antarctic Division
Bureau of Meteorology
Dr R. G. Downes, C.B.
Dr R. R. Garran
E. Gill
The Hon. P. Howson, C.M.G.
F. Keenan, M.B.E.
Dr P. G. Law, A.O., C.B.E.
J. McNally
C. Middleton
Ministry for Conservation —
Fisheries and Wildlife Division,
Arthur Rylah Institute for Environmental
Research
National Museum of Victoria
National Parks Service
R. T. M. Pescott
Royal Botanic Gardens and National
Herbarium
Royal Society of Victoria
J. Wharton

CHAPTER 5:

GOVERNMENT AND ADMINISTRATION

Australian Electoral Office
Australian Electoral Officer for Victoria
Lady Violet Brooks
The late M. Brown
Chief Electoral Officer for Victoria
Chief Parliamentary Counsel
Clerk of the Parliaments
Sir Daryl Dawson, K.B.E., C.B., Q.C.
Sir Rohan Delacombe, K.C.M.G., K.C.V.O.,
K.B.E., C.B., C.B.E., D.S.O., K.St.J.
Department of the Premier
Sir John Dillon, C.M.G.
F. G. Evans, O.B.E., V.R.D.
J. Finmore, O.B.E., Q.C.
D. Ford, M.V.O., G.M.

T. Forestal, O.B.E.
A. J. A. Gardner, I.S.O.
Lady April Hamer
M. E. Hamer, O.B.E.
N. Haynes
The late Sir Edmund Herring, K.C.M.G.,
K.B.E., D.S.O., M.C., E.D., K.St.J.
The Hon. P. Howson, C.M.G.
The late Sir John Jungwirth, C.M.G.
Keeper of Public Records
B. McDonnell
J. McGovern
The late R. Nettlefold
Ombudsman
Public Service Board of Victoria
Dr C. Saunders
W. G. Smith, C.M.G., C.V.O., O.B.E.,
O.St.J.
H. L. Speagle, O.A.M.
Dame Hilda Stevenson, D.B.E.
Sir Roland Wilson, C.B.E.
Sir Henry Winneke, K.C.M.G., K.C.V.O.,
O.B.E., K.St.J., Q.C.

CHAPTER 6:

LOCAL GOVERNMENT

J. Alder
J. Fagan
Local Government Department
Municipal Association of Victoria
J. Murray
G. Pentland
F. Rogan, C.B.E.
Town Clerk, City of Ballarat
Town Clerk, City of Bendigo
Town Clerk, City of Geelong
Town Clerk, City of Melbourne

CHAPTER 7:

DEMOGRAPHY

S. Harvey
G. Kenney
Dr F. Mackie
M. McCormack
M. Ryan

CHAPTER 8:

ABORIGINALS IN VICTORIA

Rev. Dr E. K. Cole

CHAPTER 9:

INDUSTRIAL CONDITIONS

Australian Conciliation and Arbitration
Commission —
The Hon. Mr Justice Alley
Mr Deputy President Isaac
The Hon. Mr Justice Robinson
Department of Labour and Industry

CHAPTER 10:

EMPLOYMENT AND UNEMPLOYMENT

Department of Employment and Youth Affairs
M. Feiner
Industrial Training Commission
Ministry of Employment and Training
J. Reilly

CHAPTER 11:

HOUSING, BUILDING, AND
CONSTRUCTION

H. Bartlett
R. J. Bonaldi
Sir John Buchan, C.M.G.
C. Caldwell
N. Clerihan
J. Connell
The late R.D.L. Fraser
The late Sir Roy Grounds
D. Jackson
The late Sir Osborn McCutcheon
R. P. McIntyre
G. H. Mewton
H. L. Speagle, O.A.M.
P. S. Staughton

CHAPTER 12:

MINERALS AND ENERGY

Department of Minerals and Energy
Department of Resources and Energy
Esso Australia Ltd
Gas and Fuel Corporation of Victoria
Ministry of Fuel and Energy
Dr D. Spencer-Jones
State Electricity Commission of Victoria
M. Stratton
Victorian Brown Coal Council
The late R. G. Whiting
Dr H. Worner, C.B.E.

CHAPTER 13:

WATER RESOURCES

B. Blomfield
Sir Bernard Callinan, C.B.E., D.S.O.
Department of Science and Technology—
Bureau of Meteorology
Sir Ronald East, C.B.E.
J. H. Greer
J. D. Lang
J. Mann
G. C. McCoy
Melbourne and Metropolitan Board of Works
Ministry of Water Resources and Water Supply
G. Morgan
State Rivers and Water Supply Commission

CHAPTER 14:

FORESTRY

Country Fire Authority
A. Eddy
Forests Commission, Victoria
Dr R. Grose
Dr F. R. Moulds, I.S.O.

CHAPTER 15:

FISHERIES AND WILDLIFE

A. D. Butcher, C.M.G.
J. K. Dempster
M. Downes
Ministry for Conservation —
Fisheries and Wildlife Division,
Arthur Rylah Institute for Environmental
Research

CHAPTER 16:

AGRICULTURE

Department of Agriculture, Victoria
Dr P. S. Lang, O.B.E.

Rural Finance Commission
Dr H. M. Russell
Dr D. S. Wishart, I.S.O.

CHAPTER 17:
MANUFACTURING
Dr G. J. R. Linge

CHAPTER 18:
INTERNAL TRADE
W. M. Chamberlain
W. R. McNaughtan
Sir Thomas North
Sir Kenneth Steele, D.F.C.
A. H. Tolley

CHAPTER 19:
EXTERNAL TRADE
W. M. Chamberlain
Department of the Premier

CHAPTER 20:
PUBLIC FINANCE
Sir Ernest Coates, C.M.G.
Professor W. Prest, C.B.E.
Treasury of Victoria

CHAPTER 21:
PRIVATE FINANCE
ANZ Banking Group
Australian Bankers' Association
Australian Finance Conference
The late G. R. Bruns
Building Societies Institute
The late R. Clayton
Elder Smith Goldsbrough Mort Ltd
E. S. Knight and Company
Insurance Council of Australia Ltd
Life Insurance Federation of Australia
M. Neil
Registrar of Co-operative Housing Societies
Registrar of Friendly Societies
State Superannuation Board of Victoria
The Stock Exchange of Melbourne Ltd
Trustee Companies Association of Australia
and New Zealand
Victorian Credit Co-operative Association Ltd

CHAPTER 22:
PRICES AND HOUSEHOLD
EXPENDITURE
J. Curtain
J. Humphrey
Professor W. Prest, C.B.E.
Treasury of Victoria

CHAPTER 23:
TRANSPORT
J. M. Bayley
W. P. Evans, B.E.M.
McA. Job
S. Joy
Melbourne Harbour Trust Commissioners
Ministry of Transport
I. McFarlan
Ven. J.B. Moroney, E.D.
Port of Melbourne Authority

CHAPTER 24:
COMMUNICATIONS
Australia Post—Victorian Administration
D. Baker
A. Moyal
Telecom Australia — Victorian Administration

CHAPTER 25:
EDUCATION
Catholic Education Office of Victoria
Dr T. H. Coates, O.B.E.
Commonwealth Schools Commission
Council of Adult Education
Dr N. G. Curry
Sir James Darling, C.M.G., O.B.E.
Rev. T.M. Doyle
Neville Drummond
Education Department of Victoria
P. Goodwin
Health Commission of Victoria
J. J. Leppitt
H. I. Lyon
T. Moore
Professor R. J. W. Selleck
Technical and Further Education Board
Rev. T. H. Timpson, A.O.
R. J. Wollaston

CHAPTER 26:
HEALTH AND MEDICAL RESEARCH
Emeritus Professor H. F. Atkinson, M.B.E.
Dr D. G. Christie
Dr J. E. Clarke
Sir Edward Dunlop, C.M.G., O.B.E., K.St.J.
Professor K. J. Hardy
Health Commission of Victoria
The Hon. P. Howson, C.M.G.
Dr K. McCaul
Emeritus Professor N. Manning, C.B.E.
Emeritus Professor K. F. Russell
Dr S. J. H. Shepherd
P. V. Slater
Dr W. J. Stevenson
L. B. Swinden
The late Sir Lance Townsend, V.R.D.
Professor G. N. Vaughan
Dr T. V. Walpole
Dr R. C. Webb
Professor R. Webster
Dr J. F. Wiseman
Emeritus Professor Sir Roy Wright, A.K.

CHAPTER 27:
SOCIAL WELFARE
Department of Community Welfare Services
Department of Social Security — Victoria
Sir John Dillon, C.M.G.
M. Feiner
A. J. A. Gardner, I.S.O.
K. Kelly
A. R. Kopp, M.B.E., D.F.C.
B. Stretton

CHAPTER 28:
JUSTICE AND THE ADMINISTRATION
OF LAW
Professor R. Baxt
Law Department
Law Institute of Victoria
G. Lewis

The Hon. Mr Justice McGarvie
K. Milte
A. Nicoll
The Hon. Sir John Norris, Q.C.
Sir George Paton
Dr R. L. Sharwood
T. W. Smith, Q.C.
Victoria Law Foundation
Victorian Legal Aid Commission
Professor P. L. Waller
The Hon. Sir John Young, K.C.M.G.

CHAPTER 29:

THE ARTS, LIBRARIES, AND MEDIA

Sir Joseph Burke, K.B.E.
C. Caldwell
W. M. Chamberlain
J. Clark
R. Coleman
J. Curtain
Department of the Premier
G. Fairfax, A.M.
P. Fiddian
Dr A. Galbally
D. Gibson
J. Gibson
H. Gordon
Senator D. J. Hamer, D.S.C.
The Herald and Weekly Times Limited
Professor J. Hopkins, O.B.E.
R. Lawler, O.B.E.

Lady Joan Lindsay
Library Council of Victoria
Melbourne Theatre Company
J. D. McLaren
Ministry for the Arts
Dame Elizabeth Murdoch, C.B.E.
National Trust of Australia (Victoria)
L. Parr
Public Record Office
K. Scarlett
E. K. Sinclair, C.M.G., O.B.E., D.F.C.
P. Spurrier
J. Sumner, C.B.E.
S. Van Straten
Victorian Arts Centre Trust
Victorian Arts Council
Victorian College of the Arts
M. F. E. Wright

CHAPTER 30:

SPORT AND LEISURE

Department of Youth, Sport and Recreation

APPENDIX B

R. M. Bacon
Department of the Premier and Cabinet
W. M. Frost
History of Victoria Project

APPENDIX F

The State Library of Victoria



Lieutenant-Colonel David Collins, Royal Marines, (1756-1810), established the settlement at Sullivan Bay near Sorrento in 1803.

La Trobe Collection, State Library of Victoria



William Dutton (1811-1878), seaman and whaler, who had been in residence at Portland intermittently from 1828-29.

La Trobe Collection, State Library of Victoria



Edward Henty (1810-1878), who led the family settlement at Portland in November 1834.

*La Trobe Collection, State Library of Victoria
Reproduced by permission of The Town of Portland*



Portland in 1835. Portland was the site of the first permanent European settlement in Victoria following the arrival of the Henty family in November 1834.

La Trobe Collection, State Library of Victoria

William Buckley (1780-1856), also known as the "Wild White Man", was a convict who escaped from the Sullivan Bay settlement and lived with the Aboriginals for 32 years, until discovered by members of a party left by John Batman at Indented Head.

La Trobe Collection, State Library of Victoria



John Batman (1801-1839), sailed from Launceston and settled the area where Melbourne now stands in May 1835.



John Pascoe Fawkner (1792-1869), whose agents also crossed Bass Strait and established a settlement on the Yarra River in 1835.

La Trobe Collection, State Library of Victoria



*Melbourne -
sketch from Mr. Smith's Fence
November 1836.*

A sketch of Melbourne in 1836.
La Trobe Collection, State Library of Victoria



The action at the Eureka Stockade, Ballarat, 3 December 1854, where soldiers of the 12th and 40th Regiments of Foot, together with police, suppressed diggers protesting about grievances involving gold licences.

La Trobe Collection, State Library of Victoria



Captain Sir Charles Hotham, R.N., (1806-1855), was appointed Lieutenant-Governor of the Colony of Victoria on 22 June 1854, and Captain-General and Governor-in-Chief of the Colony of Victoria on 22 May 1855.



The Hon. Peter Lalor (1827-1889) Speaker of the Legislative Assembly, formerly leader of the diggers at the Eureka Stockade.

La Trobe Collection, State Library of Victoria



The "Welcome Stranger" syndicate's mine at Bailieston, 1902.

La Trobe Collection, State Library of Victoria

The Poseidon Nugget (29,642 grams) found at Tarnagulla in 1906 was one of the largest nuggets found in Victoria.

Department of Minerals and Energy





Paddle steamers towed barges laden with wool and other cargoes from Murray River stations to river ports including the Echuca Railway Wharf (above) for dispatch to Melbourne.

La Trobe Collection, State Library of Victoria

Flinders Street, about 1912, showing the busy Pool of Melbourne opposite the Customs House.

La Trobe Collection, State Library of Victoria





The old Post Office, Melbourne, 1853.

La Trobe Collection, State Library of Victoria

Collins Street, Melbourne, looking east in the 1880s.

La Trobe Collection, State Library of Victoria





Captain William Lonsdale (1800-1864), was appointed Police Magistrate at Port Phillip by Governor Bourke in September 1836.

La Trobe Collection, State Library of Victoria



Opening of the first Commonwealth Parliament by H.R.H. The Duke of York at the Exhibition Building, Melbourne, 9 May 1901.

National Library of Australia

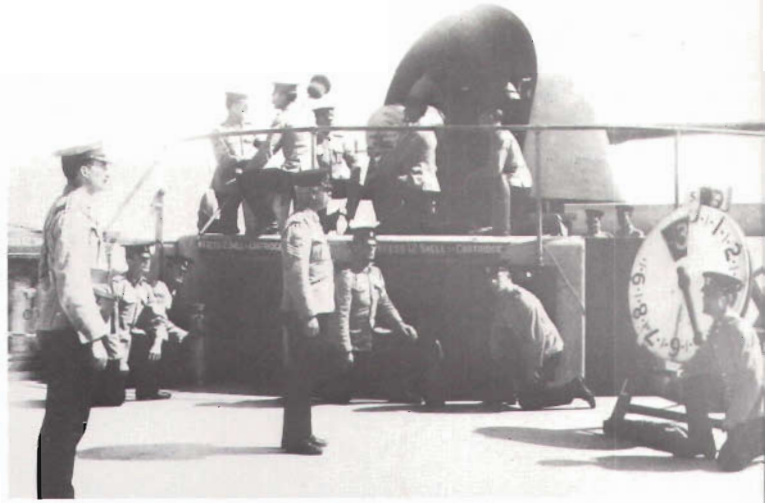


Charles Joseph La Trobe (1801-1875), was appointed Superintendent of the Port Phillip District in October 1839 and Lieutenant-Governor of Victoria on separation of the Colony from New South Wales in 1851.

La Trobe Collection, State Library of Victoria

The gun and crew at Fort Nepean which fired the first British shot of the First World War on 5 August 1914 to prevent the escape of the German ship *Pfalz*. The same gun fired the first British shot of the Second World War on 4 September 1939.

Australian War Memorial



(Right) Archbishop Daniel Mannix (1864-1963), Catholic Archbishop of Melbourne from 6 May 1917 until 6 November 1963, was the leading anti-conscriptionist in the First World War.

The Advocate Newspaper

(Far right) General Sir John Monash (1865-1931) commanded the Australian Army Corps on the western front in the First World War. He later established the State Electricity Commission of Victoria.

La Trobe Collection, State Library of Victoria

Riots during the Police strike of 1923. Special constables were organised under Sir John Monash to help restore order.

The Herald and Weekly Times Ltd





The procession led by H.R.H. The Duke of Gloucester after the dedication of the Shrine of Remembrance, 11 November 1934.

The Herald and Weekly Times Ltd



C.W.A. Scott and T. Campbell Black lead the parade through Melbourne after winning the Centenary London to Melbourne Air Race, 31 October 1934.

The Herald and Weekly Times Ltd

The final assembly of the Eucharistic Congress, 1934, with an estimated crowd of 500,000 people present.

St Patrick's Cathedral, Diocesan Historical Commission

